

# NIES NKK 400-2000 S1

Current couplings for current loads between 400 and 2000 A | Easy fitting

# Type NKK 400- 2000 S1

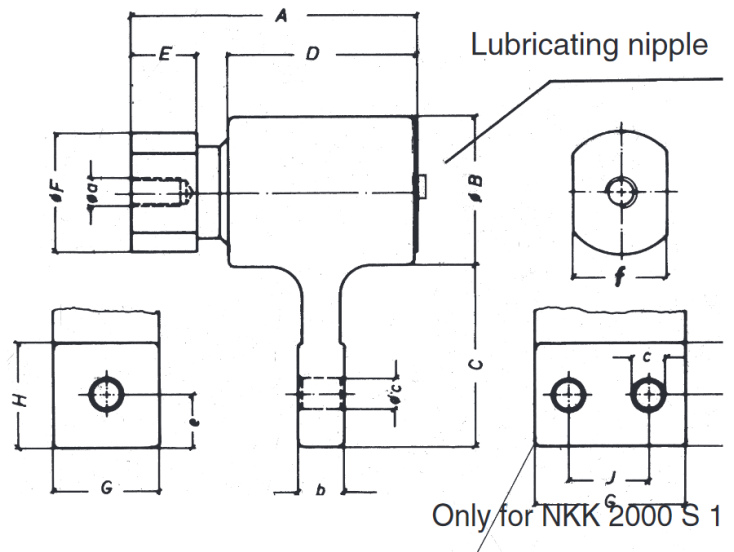
## Current couplings for current loads between 400 and 2000 A

The easy fitting and the robust design ensure a permanent and extremely safe transmission of current.

Fastening is done with a set screw DIN 913-10K, which is placed axially between the current coupling and the rotating machine component.

The casing must be secured against torsion by means of stops on the right and on the left with about 2 mm clearance to the terminal lug. Flexible cables or braided copper strips are recommended for connection.

Depending on the application the rotation speed under power load should not exceed 5 revolutions per minute.

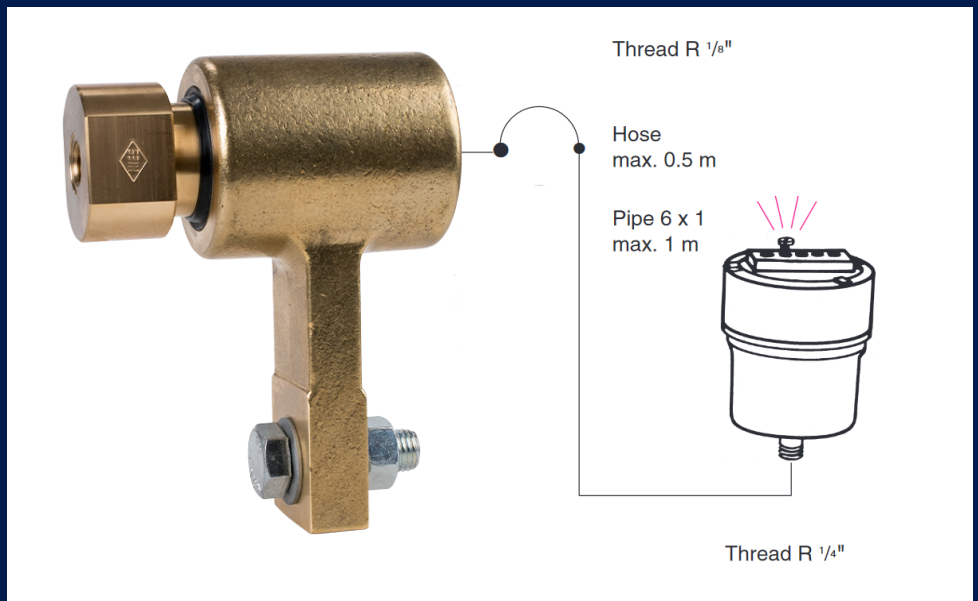


The use of an electronically controlled grease cup is recommended

The devices are provided with lubricating nipples and must be relubricated as specified in the operating manual. Only special grease P 34 should be used for lubrication.

A manual grease gun filled with special grease P 34, a nameplate with lubricating instructions as well as fitting and operating instructions are supplied.

Repairs must only be carried out by the manufacturer.



Article code	Description	A	B	C	D	E	F	G	H	J	a	b	c	e	f	kg
332.100000	NKK 400 S1	98	52	70	60	30	45	40	40	35	M16	17	12.5	20	36	1.9
332.110000	NKK 600 S1	109	58	68	71	30	45	40	40	-	M16	17	12.5	20	36	2.2
332.120000	NKK 800 S1	115	62	78	75	30	50	40	40	-	M16	17	16.5	20	42	2.7
332.130000	NKK 1200 S1	127	72	97	87	30	55	46	50	-	M16	20	16.5	25	46	4.0
332.140000	NKK 2000 S1	144	80	100	104	30	65	70	55	-	M20	22	16.5	25	55	7.3





## EXPERIENCE THE CONVENIENCE OF EVERYTHING UNDER ONE ROOF

---

At Lascentrum, you can find everything you need regarding products for welding and safety. Lascentrum has been established in 1988 and now imports a complete range of welding consumables, gouging electrodes, gas welding & cutting equipment, welding blankets, safety products and accessories.

## CONTACT

---

Nieuwland Parc 1  
2952 DA Alblasserdam,  
The Netherlands

T:+31 (0)78 642 96 56  
F:+31 (0)78 642 96 86

[www.lascentrum.com](http://www.lascentrum.com)  
[info@lascentrum.com](mailto:info@lascentrum.com)

