



AIR FORCE V3

The AIRFORCE V3 Fresh Air Set, provides air 50 x cleaner than the air in the immediate area

The PAPR AIRFORCE V3 Fresh Air Set, provides air 50 times cleaner than the air in the immediate area.

MULTI-FUNCTIONAL FLIP-UP DESIGN

The AIRFORCE V3 system has a flip-up helmet with easy lift suiting welding/cutting/grinding mode. The transparent grinding lens is curved with a large view area (20 x 12 cm)

ALL DAY COMFORT

The lightweight AirForce Fresh Air System is worn with a belt around the waist. The weight is distributed by a wide belt, lined with a shock absorbing material for comfort.

LASTING BATTERY

A rechargeable battery provides the power to the fan motor. Depending on the contamination of the filter, the battery lasts 9 hours. An acoustic sound provides a warning signal when the voltage of the battery is too low. A separate charging station is supplied with the AirForce V3 Fresh Air System. The unit can be supplied with a Li-ion battery for long-lasting protection up to 15 hours and 550 charges battery life. As Sin wave, triangle wave and square wave.

EASY-LIFT FUNCTION

The AirForce V3 system helmet is equipped with easy-lift function, therefore it is suitable for welding, cutting or grinding

INTELLIGENT ENGINEERING

The intelligent air supply self-adjusts the flow rate according to the blockage of the filter automatically. TH3 approved.

FILTER REPLACEMENT

The main filter can be compared to an air filter in a car, when polluted it has to be replaced. The unit gives an alarm through vibration, a beeping sound, and a flashing warning light. The degree of saturation of the main filter will not affect the airflow. The main filter is protected on the outside by a spark trap and a pre-filter.



HELMET SPECIFICATIONS

Optical class	1/1/1/1
Viewing area	107 x 75 mm (4.21" x 2.95")
Cartridge size	156 x 123 x 33 mm (6.14" x 4.84" x 1.30")
Arc sensor	4
Light state	DIN 4
Dark state	Variable Shade 5 ~ 8 / 9 ~ 13
Grind state	DIN 4
Cutting shade	Shade No. from 5 to 8
Welding shade	Shade No. from 9 to 13
Shade control	Internal, Digital Display Control
Power	Automatic On / Off
Sensitivity control	Low — High, Digital Display Control
UV/IR Protection	Up to Shade DIN16 at all times
Power supply	Solar cell. Battery change required; 2 x CR2450 lithium battery
Switching time	1/25.000s. from light to dark
Dark to light	0.1 ~ 1.0s by Digital Display Control
Low amperage TIG rated	≥ 2 amps / DC; ≥ 2 amps / AC
Grinding	Yes
Operating temperature	-10°C ~ +55°C (14°F ~ 131°F)
Storing temperature	-20°C ~ +70°C (- 4°F ~ 158°F)
Material helmet	High Impact Resistance Nylon
Total weight, with helmet	765 g
Application range	Stick Welding (SMAW); TIG DC&AC; TIG Pulse DC; TIG Pulse AC; MIG/MAG/CO ₂ ; MIG/MAG Pulse; Plasma Arc Cutting (PAC); Plasma Arc Welding (PAW); Air Carbon Arc Cutting (CAC-A); Oxyfuel Gas Welding (OFW); Oxygen Cutting (OC); Grinding;
Approved	CE, ANSI Z87.1, CSA Z94.3, AS/NZS 1338.1

CLEARVIEW CARTRIDGE LIGHT/ DARK STATE

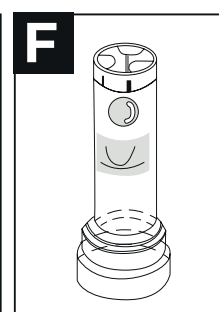
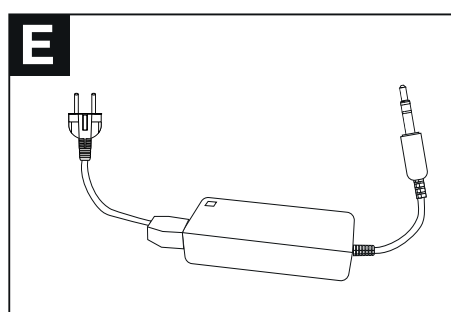
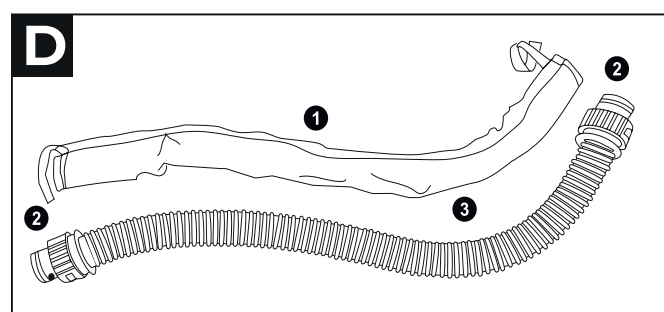
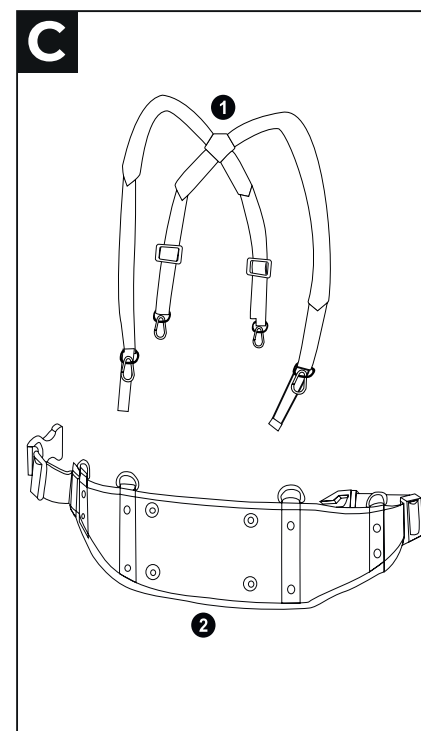
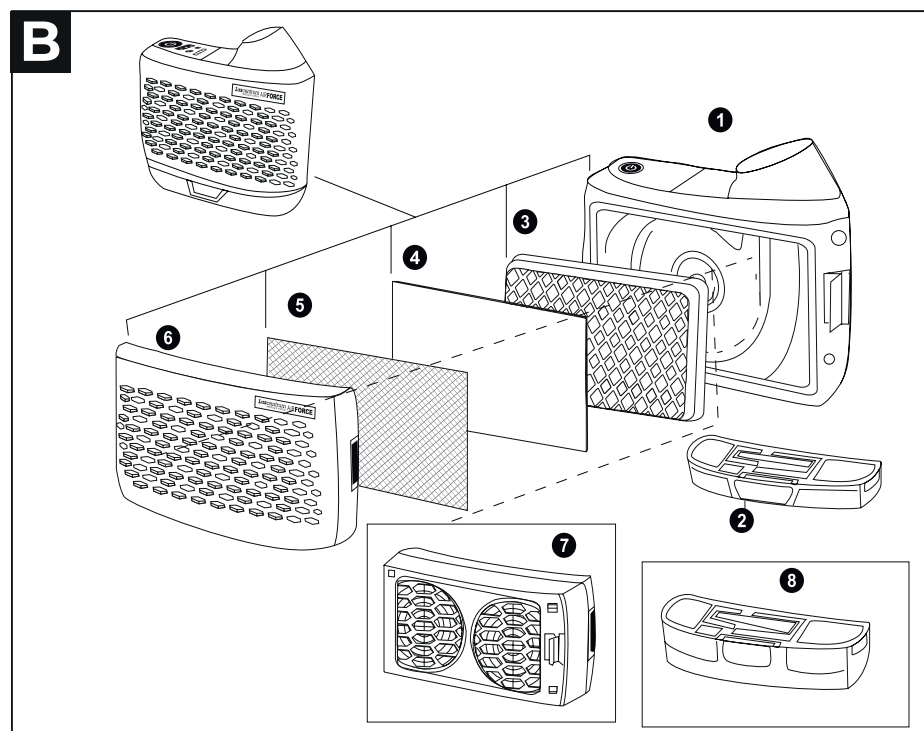
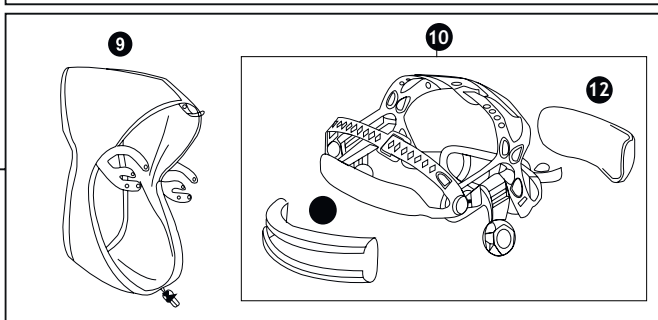
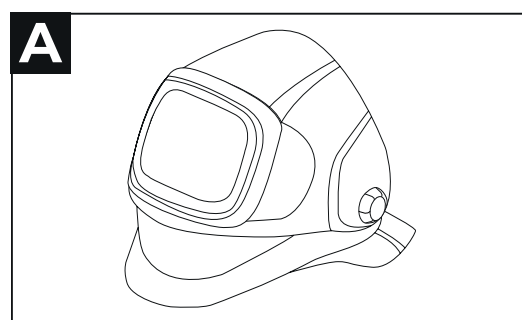
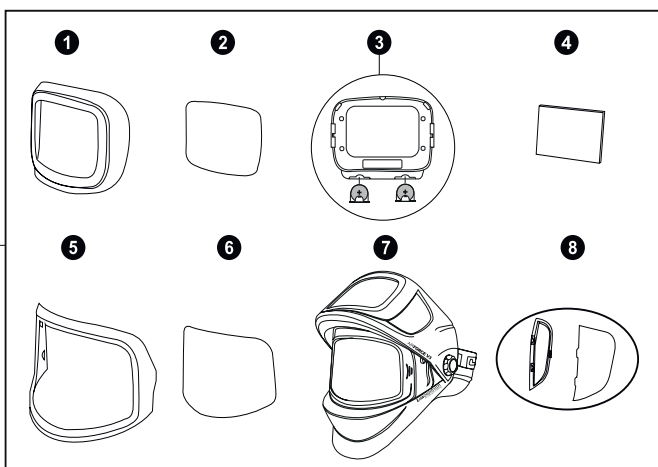
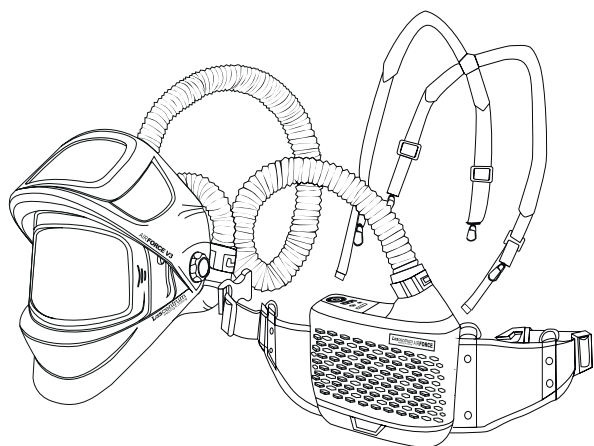


RESPIRATOR SPECIFICATIONS

Airflow Rate	Manufacturer's minimum design flow rate: 165+lpm (5.8+cfm) Low speed: 170+lpm (6+cfm) High speed: 210+lpm (7.4+cfm)
Fast-charging standard battery	Duration: 9h-low speed (170+lpm); 5-6 h-high speed (210+lpm) Battery charge time: 1 hour Battery life: > 500 charges
Battery Type	Visible, audible and vibrate
Alarms	Operating temperature: 23°F to 131° F (-5°C to 55°C) Storage temperature: 14°F to 131° F (-10°C to 55°C)
Temperature	Operating R.H.: < 90% Storage R.H.: < 85%
Relative Humidity (R.H.)	2,25 lbs (Blower unit + fast-charging standard battery)
Weight	EN12941 TH3-- Highest level of respirator protection
Filter	Filter efficiency: 99.97% (HEPA)



PARTS DRAWING



420.442400-LC

PARTLIST

A. TM1000 HELMET WITH AIR DUCT ASSEMBLY		
Item	Part No.	Description
A-1	421.442410	Front lens holder/ shell holder
A-2	421.442412	Outside cover lens (160.36x107.3mm)
A-3	421.442414	Auto darkening filter
A-4	421.442416	Inside cover lens (107x80mm)
A-5	421.442418	Grind lens holder
A-6	421.442420	Grind lens (223x129.8mm)
A-7	421.442422	Helmet shell with air duct
A-8	421.442426	Side window cover
A-9	421.442428	Face seal
A-10	421.442432	Headgear (incl. sweatband)
A-11	421.442433	Sweatband set front + rear
B. BLOWER UNIT		
Item	Part No.	Description
B-1	421.442332	Body
B-2	421.4423334	Fast-charging standard battery
B-3	421.442335	Particle filter (P3 Filter)
B-4	421.442336	Pre-filter
B-5	421.442337	Spark screen
B-6	421.442339	Filter cover
B-7*	421.4423355	Gas filter
B-8*	421.4423335	Fast-charging extended battery
C. WEARS		
Item	Part No.	Description
C-1	421.442342	Shoulder strap
C-2	421.442344	Belt cushion (Including Screws & Washers)
D. HOSE		
Item	Part No.	Description
D-1	421.442352	Hose cover
D-2	421.442354	O-ring
D-3	421.442356	Hose
E. BATTERY CHARGER		
Item	Part No.	Description
E	421.442361	Fast-charging battery/ HD battery charger
F. AIRFLOW INDICATOR		
Item	Part No.	Description
F	421.442370	Airflow indicator



EXPERIENCE THE CONVENIENCE OF EVERYTHING UNDER ONE ROOF

At Lascentrum, you can find everything you need regarding products for welding and safety. Lascentrum has been established in 1988 and now imports a complete range of welding consumables, gouging electrodes, gas welding & cutting equipment, welding blankets, safety products and accessories.

CONTACT

Nieuwland Parc 1
2952 DA Alblasserdam,
The Netherlands

T: +31 (0)78 642 96 56
F: +31 (0)78 642 96 86

www.lascentrum.com
info@lascentrum.com

