



EP - PLASMA HAND CUTTING TORCH

EP-70 | EP-70/105 | EP-105 | EP-126 | EP-160

Contents

EP - 70/105 Plasma hand cutting torch

Unicut Single-use cartridge PLUG and CUT 3

EP - 126 Plasma hand cutting torch

Unicut Single-use cartridge PLUG and CUT 5

EP - 70/105 Plasma hand cutting torch

Flatcut With 45 degree inclined arc for cutting Flat 7

EP - 126 Plasma hand cutting torch

Flatcut With 45 degree inclined arc for cutting Flat 9

EP - 160 Plasma hand cutting torch

Flatcut With 45 degree inclined arc for cutting Flat 11

EP - 70 Plasma hand cutting torch

Aironcut New high visibility consumable system
to cut inaccessible parts. 12

EP - 105 Plasma hand cutting torch

Aironcut New high visibility consumable system
to cut inaccessible parts. 14

EP - 126 Plasma hand cutting torch

Aironcut New high visibility consumable system
to cut inaccessible parts. 16

EP - 160 Plasma hand cutting torch

Aironcut New high visibility consumable system
to cut inaccessible parts. 18

EP - 70/105 Plasma hand cutting torch

Aironcut xxxl New high visibility consumable system
to cut inaccessible parts. 20

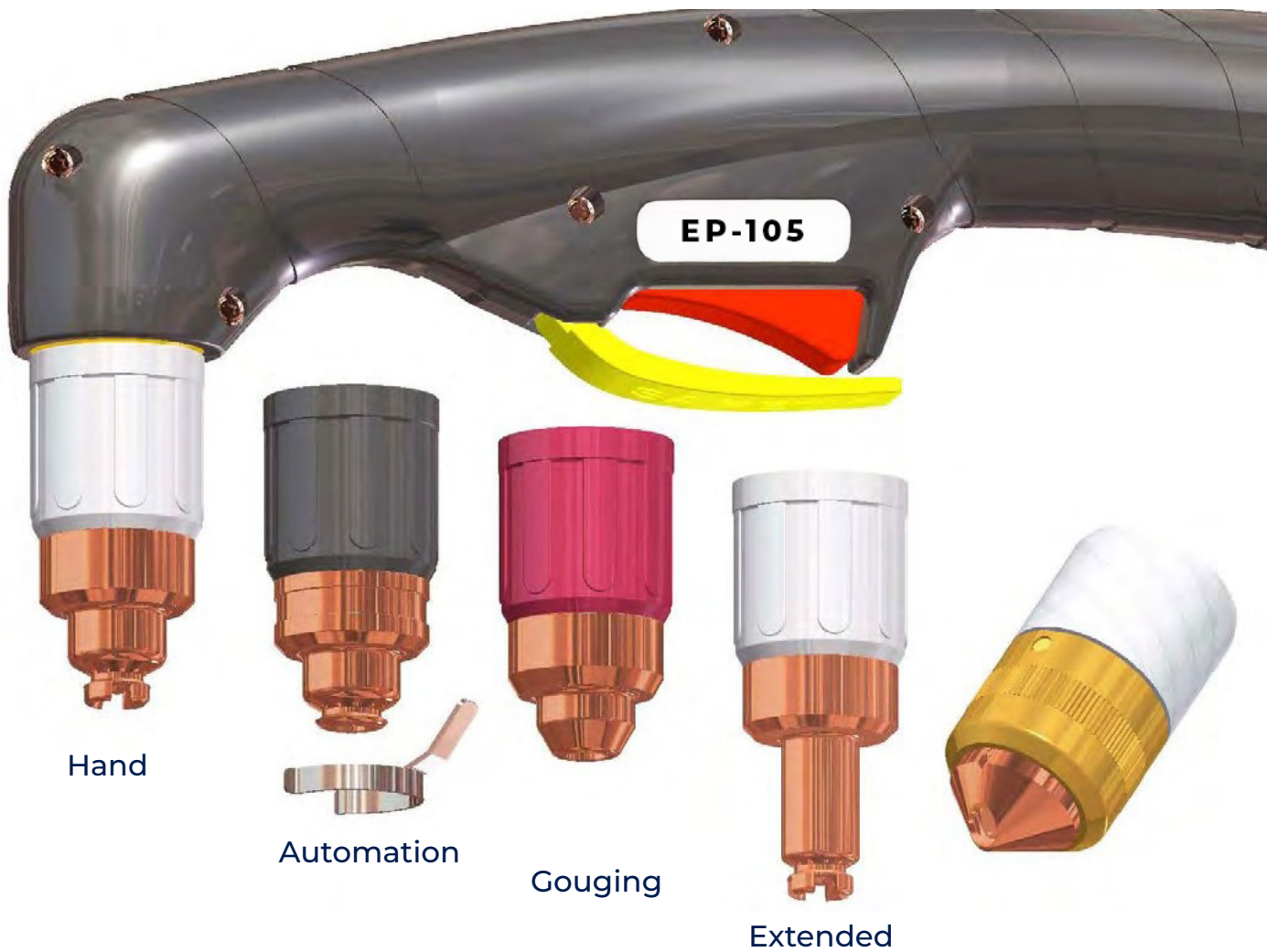
EP - 160 Plasma hand cutting torch

Aironcut xxxl New high visibility consumable system
to cut inaccessible parts. 22

EP-70/105 Plasma hand cutting torch

UNICUT®

Single-use cartridges PLUG and CUT



FLATCUT®

- Easy replacement of consumable parts
- Eliminated the risk of using unsuitable spare parts
- Identification by color based on application
- Reduced number of items in stock

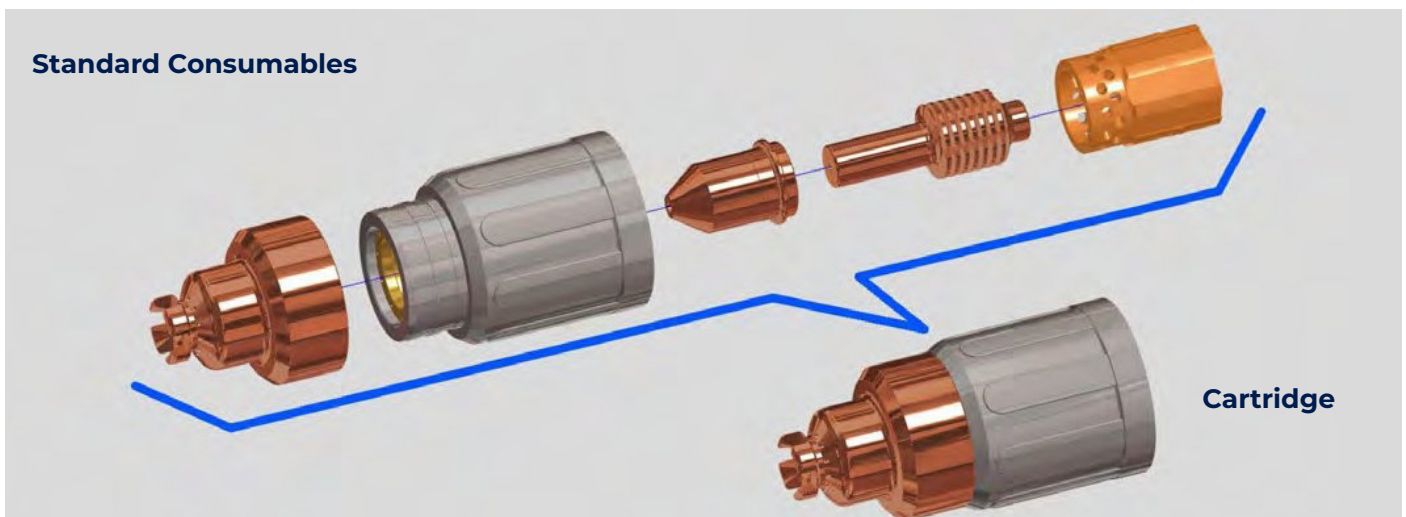


EP-70/105 Plasma hand cutting torch

UNICUT®

Single-use cartridges PLUG and CUT

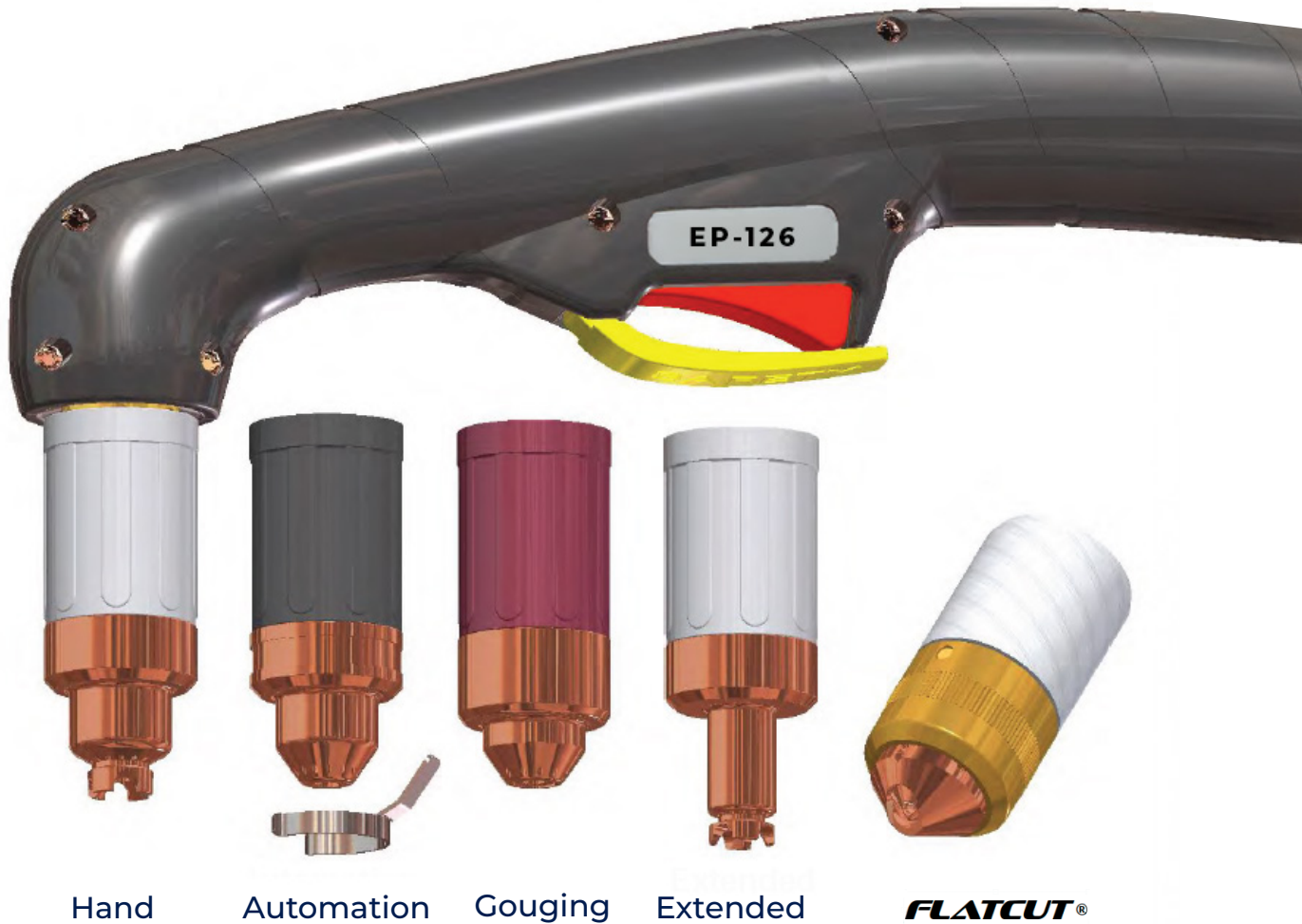
	Article code	Description
Hand		
	375.53601M	Cartridge EP-70/105 45 A hand cutting
	375.53602M	Cartridge EP-70/105 70 A hand cutting
	375.53603M	Cartridge EP-105 85 A hand cutting
	375.53604M	Cartridge EP-105 105 A hand cutting
Automation		
	375.53606M	Cartridge UPM-70/105 45 A machine cutting
	375.53607M	Cartridge UPM-70/105 70 A machine cutting
	375.53608M	Cartridge EP-105 85 A machine cutting
	375.53609M	Cartridge EP-105 105 A machine cutting
	375.53671.44	Clip OHMIC (pcs.3)
Gouging		
	375.53611M	Cartridge EP-70/105 45 A gouging
	375.53612M	Cartridge EP-70/105 70 A gouging
	375.53613M	Cartridge EP-105 105 A gouging
Extended		
	375.53615M	Cartridge EP-70/105 45 A extended hand cutting
	375.53616M	Cartridge EP-70/105 70 A extended hand cutting
	375.53617M	Cartridge EP-105 85 A extended hand cutting
	375.53618M	Cartridge EP-105 105 A extended hand cutting
FLATCUT®		
	375.53630	Cartridge EP-70/105 40/70 A FLATCUT
	375.53631	Cartridge EP-70/105 80/105 A FLATCUT



EP-126 Plasma hand cutting torch

UNICUT®

Single-use cartridges PLUG and CUT



- Easy replacement of consumable parts
- Eliminated the risk of using unsuitable spare parts
- Identification by color based on application
- Reduced number of items in stock



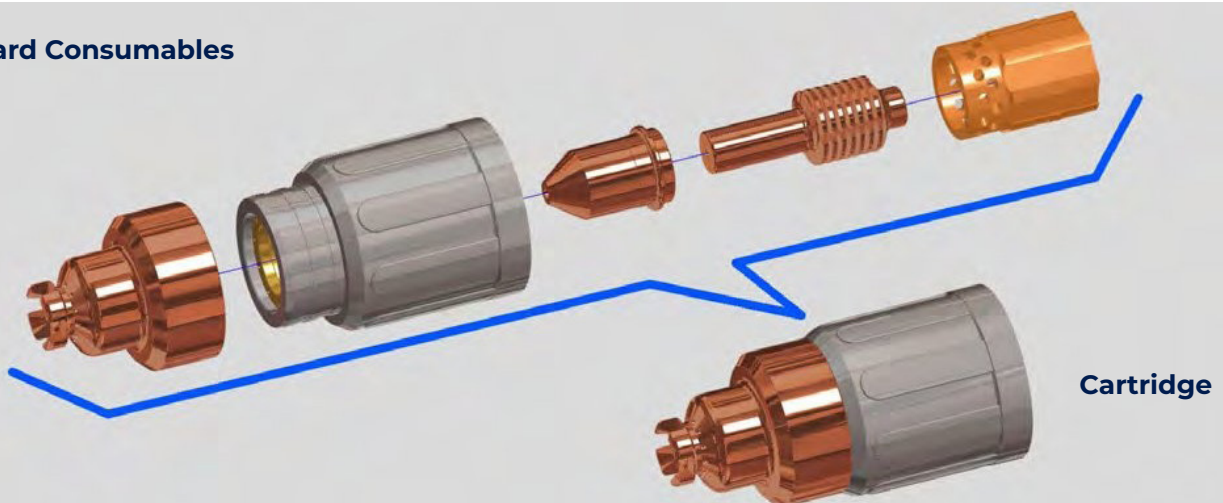
EP-126 Plasma hand cutting torch

UNICUT®

Single-use cartridges PLUG and CUT

	Article code	Description
Hand		
	375.53641M	Cartridge EP-126 45 A hand cutting
	375.53642M	Cartridge EP-126 65 A hand cutting
	375.53643M	Cartridge EP-126 85 A hand cutting
	375.53644M	Cartridge EP-126 105 A hand cutting
	375.53645M	Cartridge EP-126 126 A hand cutting
Automation		
	375.53647M	Cartridge EP-126 45 A machine cutting
	375.53648M	Cartridge EP-126 65 A machine cutting
	375.53649M	Cartridge EP-126 85 A machine cutting
	375.53650M	Cartridge EP-126 105 A machine cutting
	375.53651M	Cartridge EP-126 126 A machine cutting
	375.53672.44	Clip OHMIC (pcs.3)
Gouging		
	375.53654M	Cartridge EP-126 65/85 A gouging
	375.53655M	Cartridge EP-126 105 A gouging
	375.53656M	Cartridge EP-126 105 A gouging
Extended		
	375.53659M	Cartridge EP-126 65 A extended hand cutting
	375.53660M	Cartridge EP-126 85 A extended hand cutting
	375.53661M	Cartridge EP-126 105 A extended hand cutting
	375.53662M	Cartridge EP-126 126 A extended hand cutting
FLATCUT®		
	375.53632	Cartridge EP-126 40/70 A FLATCUT
	375.53633	Cartridge EP-126 80/126 A FLATCUT

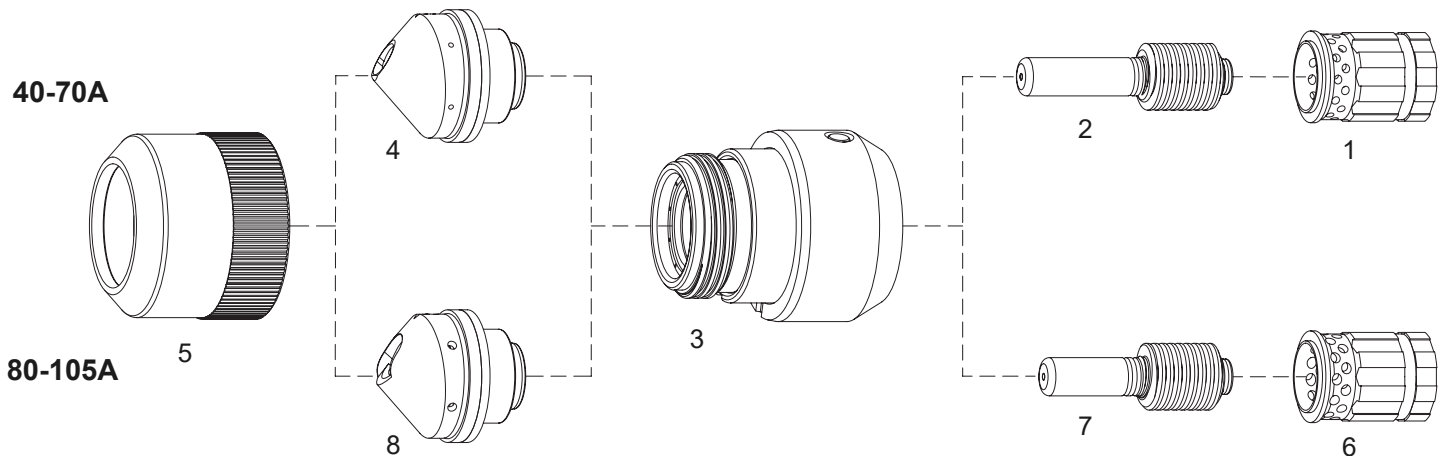
Standard Consumables



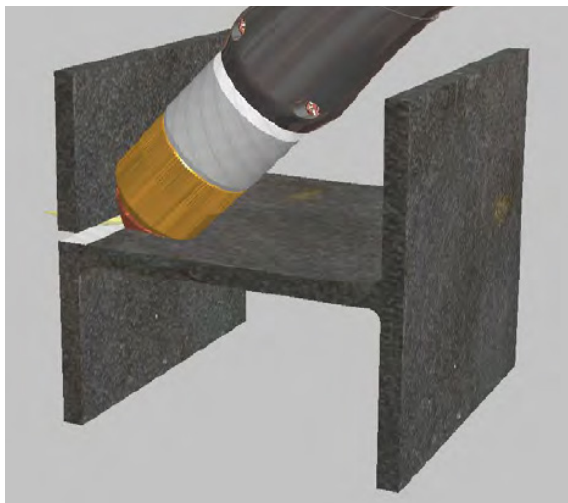
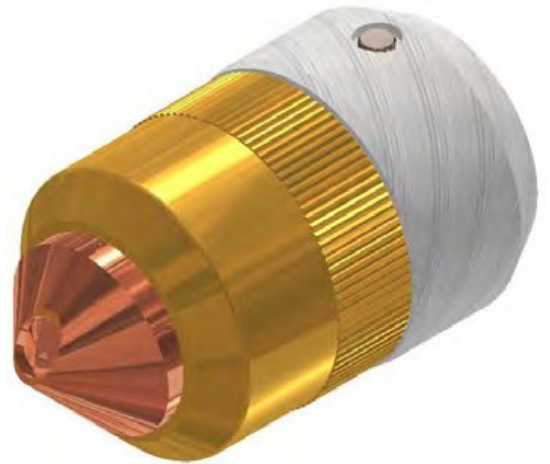
EP-70/105 Plasma hand cutting torch

FLATCUT®

with 45 degree inclined arc for cutting Flat



Article code	Description	Pkg	#
375.53501	Standard KIT 40-70 A	1	
375.60075	Swirl ring 40-70 A	2	1
375.53519	Electrode 40-70 A	5	2
375.53510	Retaining cap	1	3
375.53530	Tip 40-70 A	5	4
375.53541	Retaining ring	2	5
375.53502	Standard KIT 80-105 A	1	
375.60076	Swirl ring 80-105 A	2	6
375.53520	Electrode 80-105 A	5	7
375.53510	Retaining cap	1	3
375.53531	Tip 80-105 A	5	8
375.53541	Retaining ring	2	5



EP-70/105 Plasma hand cutting torch

FLATCUT®

Some cutting examples that can be performed with the FLATCUT

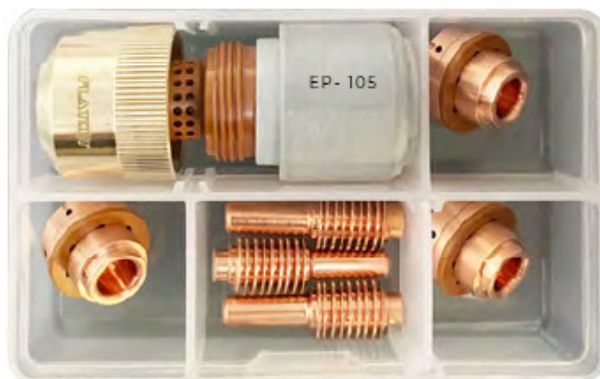
BXAEP105-FC Special box

Article code	Description	Qty
375.53502	Tip 80-126A standard KIT 80-105 A	1
375.60075	Swirl ring 40-70 A	1
375.53519	Electrode 40-70 A	5
375.53530	Tip 40-70 A	5
375.60076	Swirl ring 80-105 A	1
375.53520	Electrode 80-105 A	5
375.53531	Tip 80-105 A	5



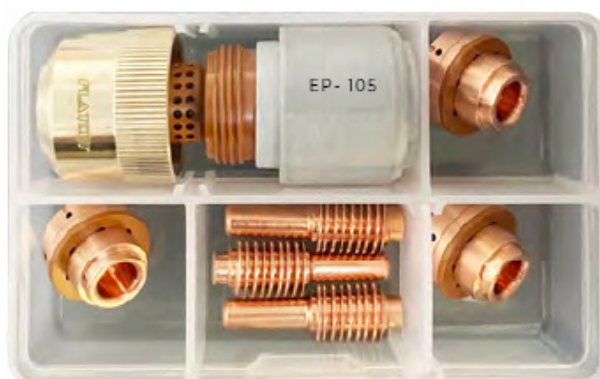
BXDEP70-FC Mini Kit 40-70 A

Article code	Description	Qty
375.60075	Swirl ring 40-70 A	1
375.53519	Electrode 40-70 A	3
375.53510	Retaining cap	1
375.53530	Tip 40-70 A	3
375.53541	Retaining ring	1



BXDEP105-FC Mini Kit 80-105 A

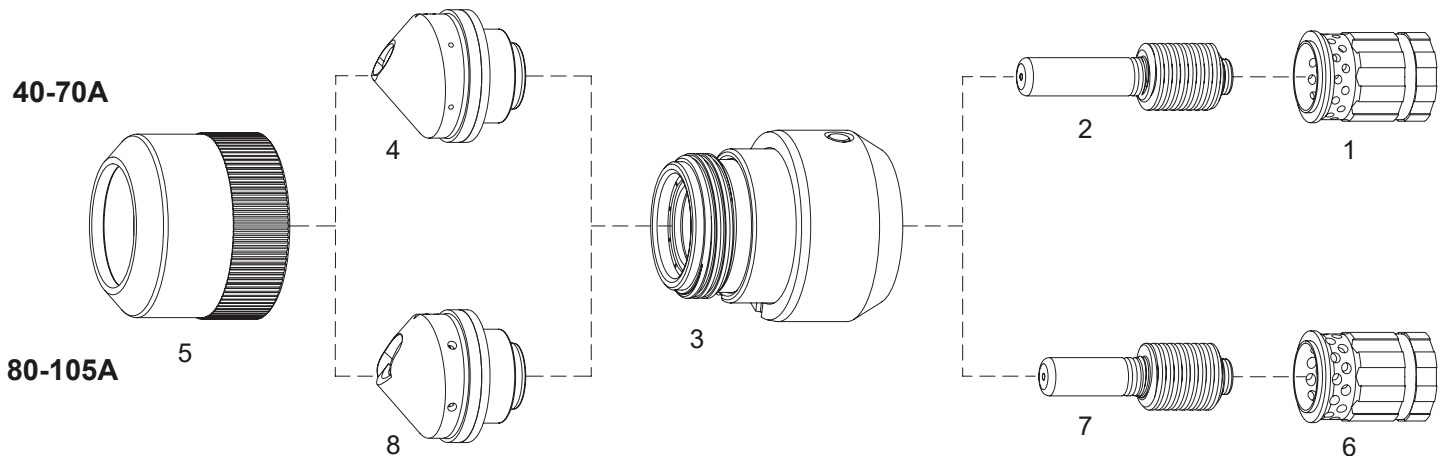
Article code	Description	Qty
375.60063	Swirl ring 80-105 A	1
375.52677	Electrode 80-105 A	3
375.53511	Retaining cap	1
375.53533	Tip 80-105 A	3
375.53541	Retaining ring	1



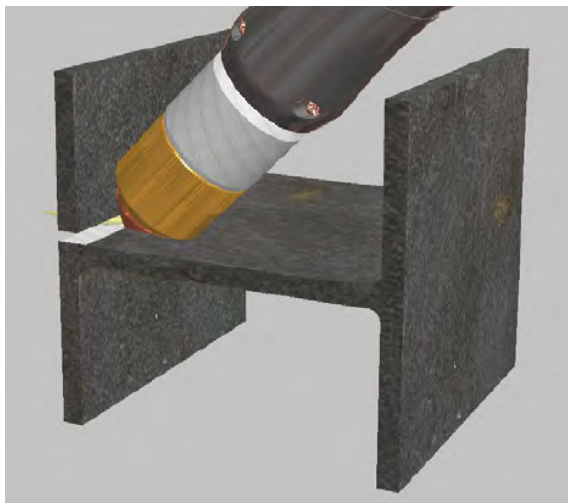
EP-126 Plasma hand cutting torch

FLATCUT®

with 45 degree inclined arc for cutting Flat



Article code	Description	Pkg	#
375.53504	Standard KIT 40-70 A	1	
375.60062	Swirl ring 40-70 A	2	1
375.53521	Electrode 40-70 A	5	2
375.53511	Retaining cap	1	3
375.53532	Tip 40-70 A	5	4
375.53541	Retaining ring	2	5
375.53505	Standard KIT 80-126 A	1	
375.60063	Swirl ring 80-126 A	2	6
375.52677	Electrode 80-126 A	5	7
375.53511	Retaining cap	1	3
375.53533	Tip 80-126 A	5	8
375.53541	Retaining ring	2	5



EP-126 Plasma hand cutting torch

FLATCUT®

Some cutting examples that can be performed with the FLATCUT

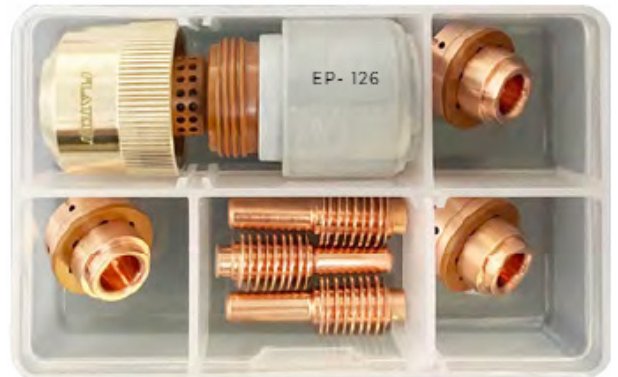
BXAEP105-FC Special box

Article code	Description	Qty
375.53505	Tip 80-126 A standard KIT 80-126 A	1
375.60062	Swirl ring 40-70 A	1
375.53521	Electrode 40-70 A	5
375.53532	Tip 40-70 A	5
375.60063	Swirl ring 80-126 A	1
375.52677	Electrode 80-126 A	5
375.53533	Tip 80-105 A	5



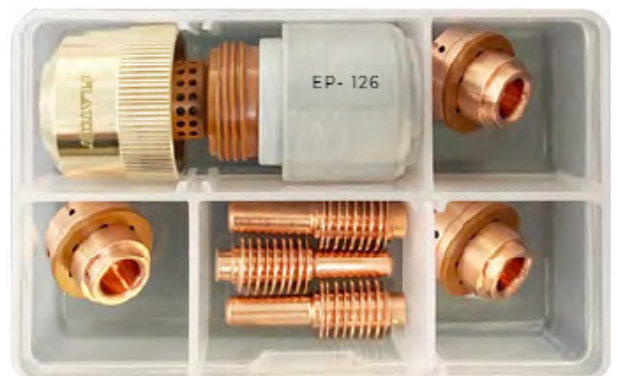
BXDEP70-FC Mini Kit 40-70 A

Article code	Description	Qty
375.60062	Swirl ring 40-70 A	1
375.53521	Electrode 40-70 A	3
375.53511	Retaining cap	1
375.53532	Tip 40-70A	3
375.53541	Retaining ring	1



BXDEP105-FC Mini Kit 80-126 A

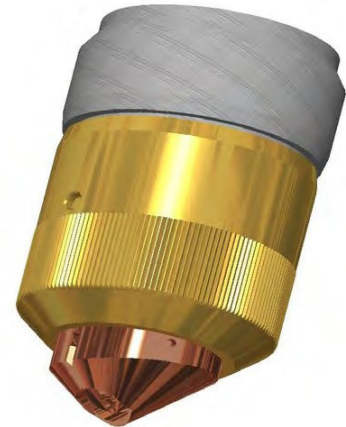
Article code	Description	Qty
375.60063	Swirl ring 80-126 A	1
375.52677	Electrode 80-126 A	3
375.53511	Retaining cap	1
375.53533	Tip 80-105 A	3
375.53541	Retaining ring	1



EP-160 Plasma hand cutting torch

FLATCUT®

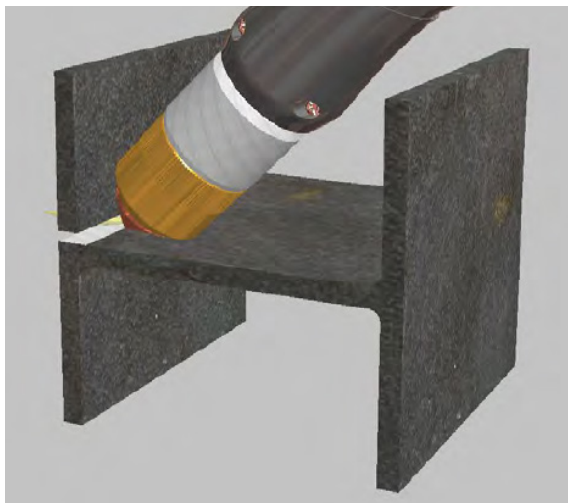
with 45 degree inclined arc for cutting Flat



Article code	Description	Pkg
375.53637	Standard KIT 85-126 A	1
375.53638	Standard KIT 130-160 A	1

BXEEP-160FC Kit 85-160 A

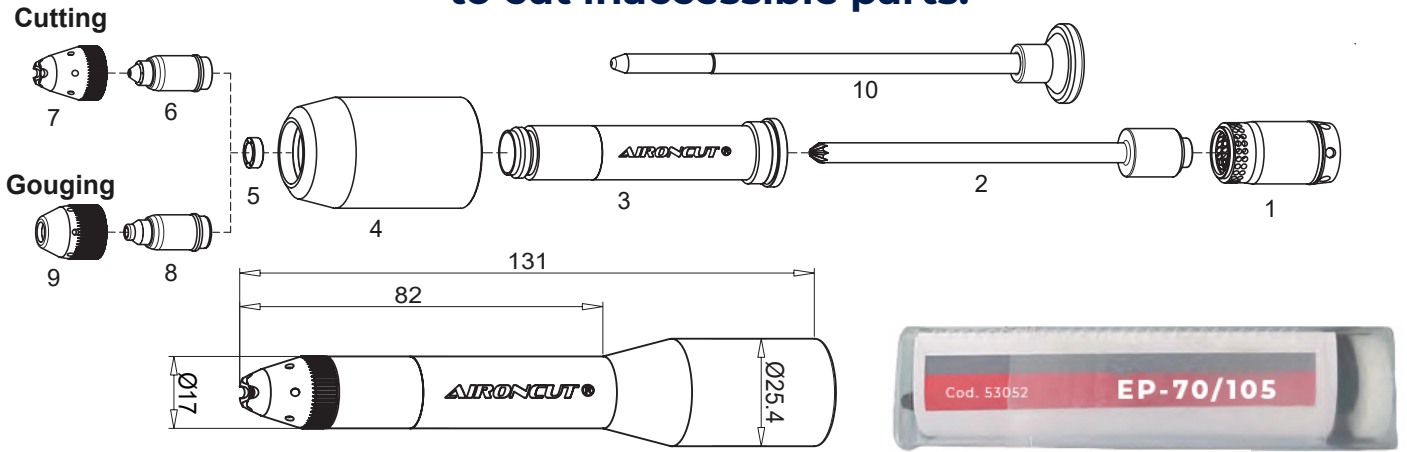
Article code	Description	Qty
375.53544	Electrode with swirl ring	1
375.53545	Retaining cap	1
375.53535	Tip 85-126 A	1
375.53536	Tip 130-160 A	1
375.53543	Retaining ring	1



EP-70 Plasma hand cutting torch

AIRONCUT®

**New high visibility consumable system
to cut inaccessible parts.**



For gouging use maximum 4 bar

53052 Standard Kit 70 A cutting

Article code	Description	Pkg	#
375.60041E	Swirl ring 20-70 A	2	1
375.53001	Electrode	3	2
375.53012	Shield cup body	1	3
375.53022	Vortex ring	3	4
375.53031	Tip 20-45 A	5	5
375.53032	Tip 70 A	5	
375.53047	Shield cap cutting	5	6
375.53036	Tip 50A gouging	5	7
375.53037	Tip 70 A gouging	5	
375.53046	Shield cap gouging	5	8
375.53080	Extractor for tip	1	9

BXAEP70-AC Speciale box

375.53031 45 A Max Thickness 8 mm
375.53032 70 A Max Thickness 12.5 mm

Article code	Description	Qty
375.53052	Standards Kit 70A cutting	1
375.60041E	Swirl ring 20-70 A	1
375.53001	Electrode	2
375.53022	Vortex ring	2
375.53031	Tip 20-45 A	3
375.53032	Tip 70 A	5
375.53047	Shield cap cutting	2
375.53036	Tip 50 A gouging	3
375.53037	Tip 70 A gouging	5
375.53046	Shield cap gouging	2



EP-70 Plasma hand cutting torch

AIRONCUT®

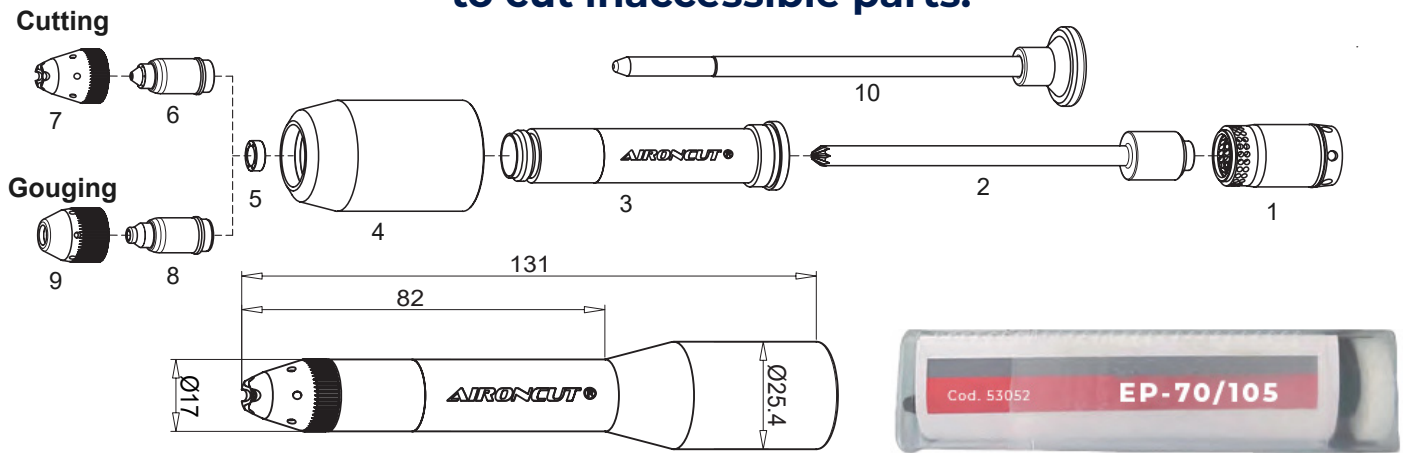
New high visibility consumable system
to cut inaccessible parts.



EP-105 Plasma hand cutting torch

AIRONCUT®

**New high visibility consumable system
to cut inaccessible parts.**



For gouging use maximum 4 bar

53052 Standard Kit 70 A cutting

Article code	Description	Pkg	#
375.60041E	Swirl ring 20-70 A	2	1
375.60024E	Swirl ring 100 A	2	2
375.53001	Electrode	3	3
375.53012	Shield cup body	1	4
375.53022	Vortex ring	3	5
375.53031	Tip 20-45 A	5	6
375.53032	Tip 70 A	5	
375.53034	Tip 100 A	5	
375.53047	Shield cap cutting	5	7
375.53036	Tip 50 A gouging	5	8
375.53037	Tip 70 A gouging	5	
375.53038	Tip 100 A gouging	5	
375.53046	Shield cap gouging	5	9
375.53080	Extractor for tip	1	10

BXAEP70-AC Speciale box

Article code	Description	Qty
375.53052	Standards Kit 70A cutting	1
375.60041E	Swirl ring 20-70 A	1
375.60024E	Swirl ring 100 A	1
375.53001	Electrode	2
375.53022	Vortex Ring	2
375.53031	Tip 20-45 A	3
375.53032	Tip 70 A	3
375.53034	Tip 100 A	5
375.53047	Shield cap cutting	2
375.53037	Tip 70A gouging	3
375.53038	Tip 100A gouging	5
375.53046	Shield Cap gouging	2



375.53031 45 A Max Thickness 8 mm
 375.53032 70 A Max Thickness 12.5 mm
 375.53034 100 A Max Thickness 20.0 mm

EP-105 Plasma hand cutting torch

AIRONCUT®

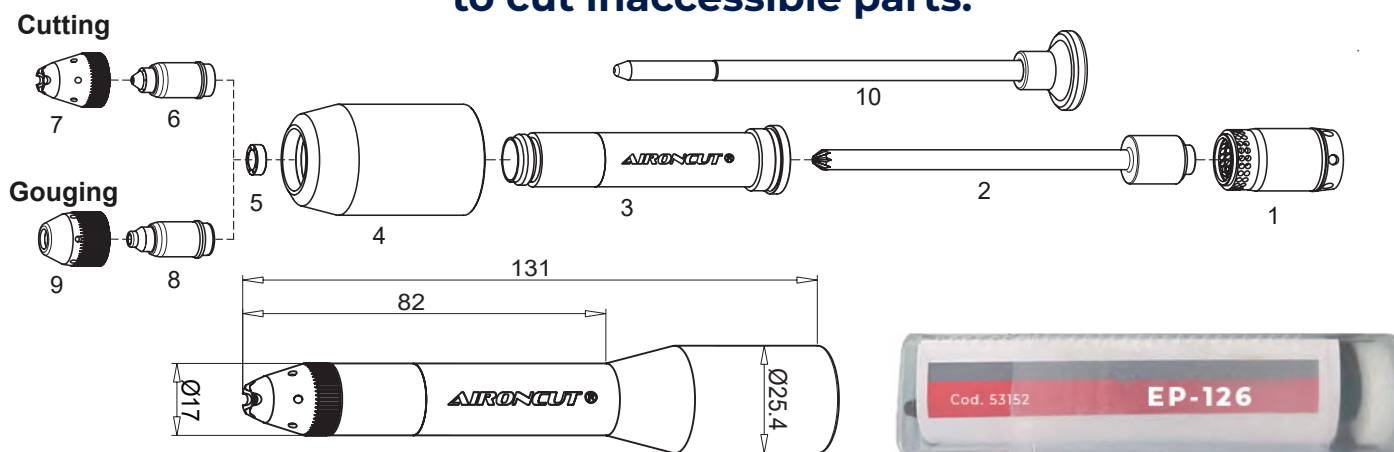
New high visibility consumable system
to cut inaccessible parts.



EP-126 Plasma hand cutting torch

AIRONCUT®

**New high visibility consumable system
to cut inaccessible parts.**



For gouging use maximum 4 bar

53152 Standard Kit 70 A cutting

Article code	Description	Pkg	#
375.60042E	Swirl ring 20-70 A	2	1
375.60040E	Swirl ring 100 A	2	2
375.53101	Electrode	3	3
375.53112	Shield cup body	1	4
375.53022	Vortex ring	3	5
375.53031	Tip 20-45 A	5	6
375.53032	Tip 70 A	5	
375.53034	Tip 100 A	5	
375.53047	Shield cap cutting	5	7
375.53036	Tip 50 A gouging	5	8
375.53037	Tip 70 A gouging	5	
375.53038	Tip 100 A gouging	5	
375.53046	Shield cap gouging	5	9
375.53080	Extractor for tip	1	10

BXAEP70-AC Speciale box

Article code	Description	Qty
375.53052	Standards Kit 70 A cutting	1
375.60042E	Swirl Ring 20-70 A	1
375.60040E	Swirl Ring 100 A	1
375.53101	Electrode	2
375.53022	Vortex ring	2
375.53031	Tip 20-45 A	3
375.53032	Tip 70 A	3
375.53034	Tip 100 A	5
375.53047	Shield cap cutting	2
375.53037	Tip 70 A gouging	3
375.53038	Tip 100 A gouging	5
375.53046	Shield cap gouging	2



375.53031	45 A	Max Thickness	8 mm
375.53032	70 A	Max Thickness	12.5 mm
375.53034	100 A	Max Thickness	20.0 mm

EP-126 Plasma hand cutting torch

AIRONCUT®

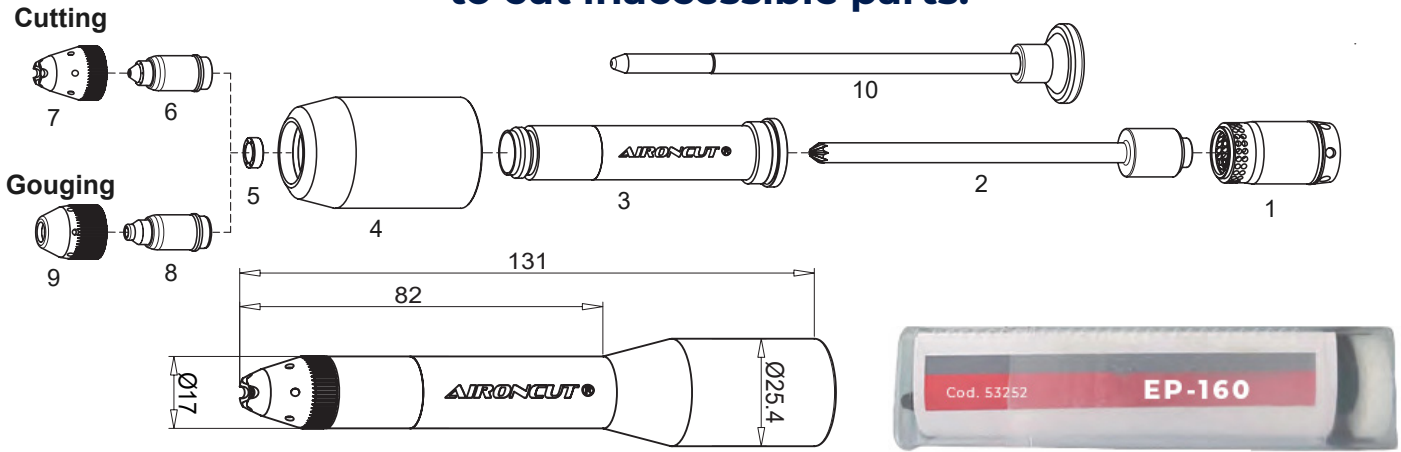
New high visibility consumable system
to cut inaccessible parts.



EP-160 Plasma hand cutting torch

AIRONCUT®

**New high visibility consumable system
to cut inaccessible parts.**



For gouging use maximum 4 bar

53252 Standard Kit 70 A cutting

Article code	Description	Pkg	#
375.60039E	Swirl ring	2	1
375.53201	Electrode	2	2
375.53211	Shield cup body	3	3
375.53212	Retaining cap	1	4
375.53022	Vortex ring	3	5
375.53031	Tip 20-45 A	5	6
375.53032	Tip 70 A	5	
375.53034	Tip 100 A	5	
375.53047	Shield cap cutting	5	7
375.53036	Tip 50 A gouging	5	8
375.53037	Tip 70 A gouging	5	
375.53038	Tip 100 A gouging	5	
375.53046	Shield cap gouging	5	9
375.53080	Extractor for tip	1	10

BXAEP70-AC Speciale box

Article code	Description	Qty
375.53052	Standards Kit 70 A cutting	1
375.60042E	Swirl ring 20-70 A	1
375.60040E	Swirl ring 100 A	1
375.53101	Electrode	2
375.53022	Vortex ring	2
375.53031	Tip 20-45 A	3
375.53032	Tip 70 A	3
375.53034	Tip 100 A	5
375.53047	Shield cap cutting	2
375.53037	Tip 70A gouging	3
375.53038	Tip 100A gouging	5
375.53046	Shield cap gouging	2



375.53031	45 A	Max Thickness	8 mm
375.53032	70 A	Max Thickness	12.5 mm
375.53034	100 A	Max Thickness	20.0 mm

EP-160 Plasma hand cutting torch

AIRONCUT®

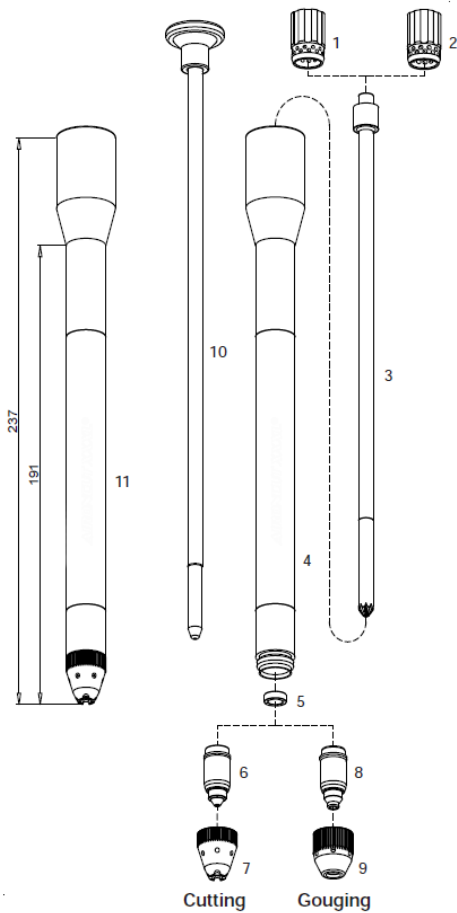
New high visibility consumable system
to cut inaccessible parts.



EP-70/105 Plasma hand cutting torch

AIRONCUT XXXL®

**New high visibility consumable system
to cut inaccessible parts.**



53052L Standard Kit 70A Cutting

For gouging use maximum 4 bar

375.53031	45 A	Max Thickness	8 mm
375.53032	70 A	Max Thickness	12.5 mm
375.53034	100 A	Max Thickness	20.0 mm

Article code	Description	#	Pkg
375.53052L	Complete Kit 70 A cutting	11	1
375.60041E	Swirl ring 20-70 A	1	2
375.60024E	Swirl ring 100 A	2	2
375.53001L	Electrode **	3	3
375.53012L	Shield cup body	4	1
375.53022	Vortex ring	5	3
375.53031	Tip 20-45 A	6	5
375.53032	Tip 70 A		5
375.53034	Tip 100 A		5
375.53047	Shield cap 20-100 A	7	5
375.53036	Tip 50 A gouging	8	5
375.53037	Tip 70 A gouging		5
375.53038	Tip 100 A gouging		5
375.53046	Shield cap gouging	9	5
375.53080	Extractor for tip	10	1

EP-70/105 Plasma hand cutting torch

AIRONCUT XXXL ®

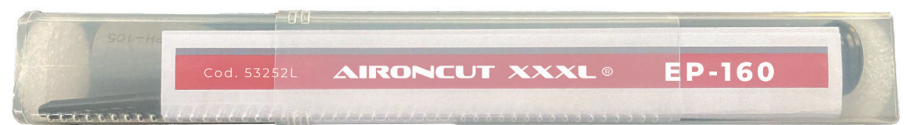
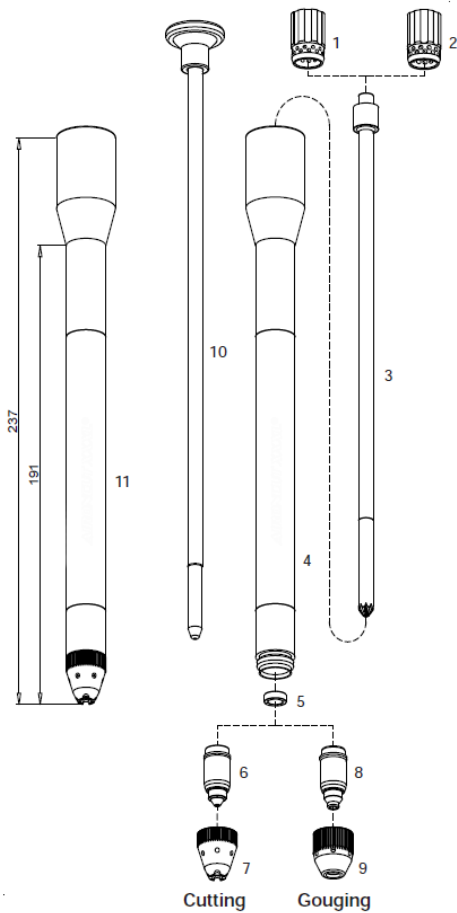
**New high visibility consumable system
to cut inaccessible parts.**



EP-160 Plasma hand cutting torch

AIRONCUT XXXL®

**New high visibility consumable system
to cut inaccessible parts.**



53252L Standard Kit 70A Cutting

For gouging use maximum 4 bar

375.53031	45 A	Max Thickness	8 mm
375.53032	70 A	Max Thickness	12.5 mm
375.53034	100 A	Max Thickness	20.0 mm

Article code	Description	#	Pkg
375.53052L	Complete Kit 70 A cutting	11	1
375.60039E	Swirl ring	1	2
375.60024E	Electrode **	2	2
375.53001L	Shield cup body	3	3
375.53012	Retaining cap	4	1
375.53022	Vortex ring	5	3
375.53031	Tip 20-45 A	6	5
375.53032	Tip 70 A		5
375.53034	Tip 100 A		5
375.53047	Shield cap 20-100 A	7	5
375.53036	Tip 50 A gouging	8	5
375.53037	Tip 70 A gouging		5
375.53038	Tip 100 A gouging		5
375.53046	Shield cap gouging	9	5
375.53080L	Extractor for tip	10	1

EP-160 Plasma hand cutting torch

AIRONCUT XXXL ®

**New high visibility consumable system
to cut inaccessible parts.**





EXPERIENCE THE CONVENIENCE OF EVERYTHING UNDER ONE ROOF

At Lascentrum, you can find everything you need regarding products for welding and safety. Lascentrum has been established in 1988 and now imports a complete range of welding consumables, gouging electrodes, gas welding & cutting equipment, welding blankets, safety products and accessories.

CONTACT

Nieuwland Parc 1
2952 DA Alblasterdam,
The Netherlands

T:+31 (0)78 642 96 56
F:+31 (0)78 642 96 86

www.lascentrum.com
info@lascentrum.com

