



AC/DC SUBMERGED WELDING

Hi 1500SA

The largest Inverter DC/AC 1500A welding power



Model		Hi 700	Hi 1500
Rated power	KVA	40	90
Input voltage	V	3P 400V±10%	3P 380V/400V±10%
Frequency	Hz	60	60
Rated output current	A	700	1500
Rated output voltage	V	50	50
Rated output current range	A	250~700	300~1500
Rated output voltage range	V	25~50	25~50
Max open circuit voltage	V	80	80
Duty cycle	%	100	100
Weight	kg	160	395
Dimension (WxDxH)	mm	500x730x860	600x1000x1300

Package configuration

- Welding machine
- Control cable 10m
- Earth cable 5m
- Two-rail carriage (1.8m)
- Welding cable 10m
- Input cable 5m

Options

- Carriage
- Each cable distance
- Clamp shape

Recommended welding consumables(HYUNDAI)

S-707 x L-8, S-777MX x H14, etc.

Features

Inverter Welding Machine (Hi700, Hi1500)

- ▶ AC / DC combined power source designed for automatic welding
- ▶ Able to High current SAW welding
- ▶ Compatible with high current SAW welding
- ▶ Increased productivity and quality with accurately controlled output

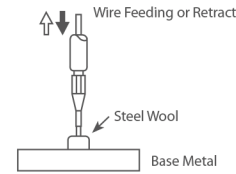
Various welding output characteristics

- ▶ Can select output characteristics by operating the mode switch (AC / DC, CC / CV, AC frequency, analog carriage / digital carriage)

Stability

- ▶ Overheating, over-current, short-circuit protection
- ▶ Stable welding output even during an input power variation of ±10%

AC WELDING : GREAT ARC START WITHOUT STEEL WOOL



MOVING CORE TYPE

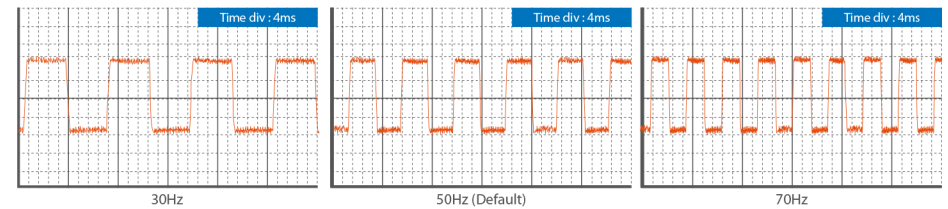


Hi SAW



AC OUTPUT CONTROL WITH CHANGEABLE FREQUENCY

Optimum weldability and welding quality on variable base metals

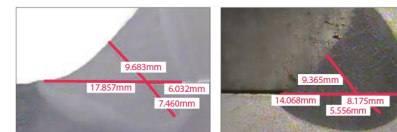
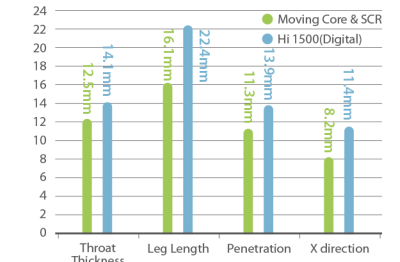
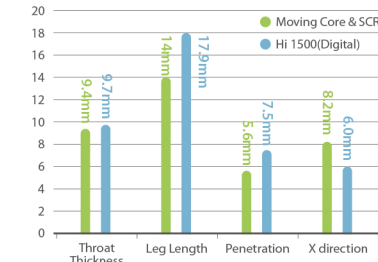


WELDABILITY COMPARISON

Comparison of DIGITAL and SCR welding machine

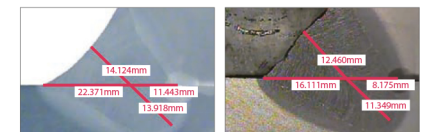
< Leading : 900A, trailing : 800A, 70cpm >

< Leading : 1250A, trailing : 1000A, 70cpm >



Hi 1500 (DIGITAL)

Moving Core & SCR



Hi 1500 (DIGITAL)

Moving Core & SCR