

# KW-1500

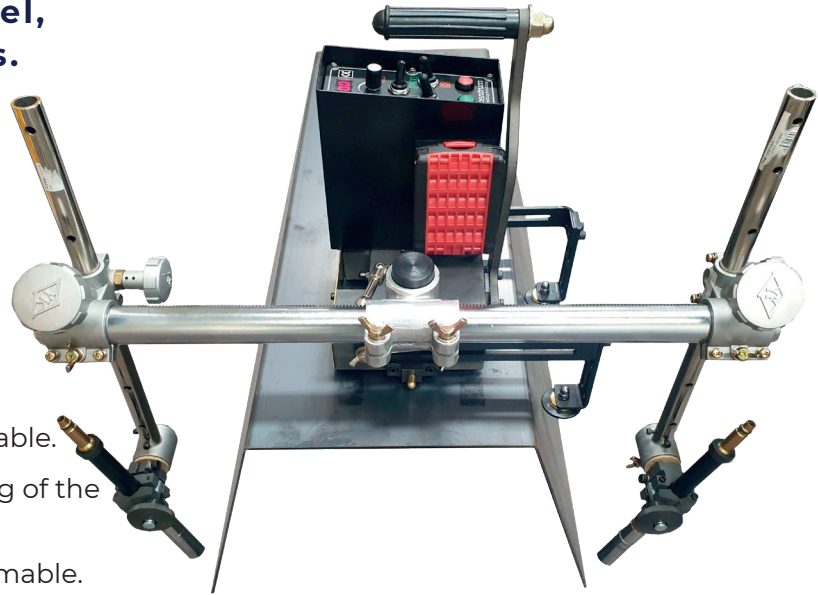
Fillet welder | Floor driving | Dual torch | Stitch and Continuous

# 310.KW-1500

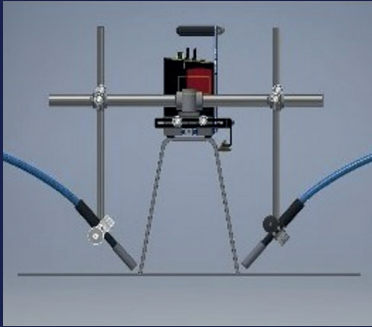
## Fillet welder for U-RIB, floor travel, dual torch, stitch and continuous.

### FEATURES

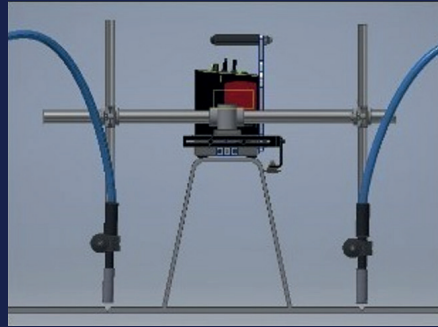
- Dual torch, applying U-RIB on the top of the profile.
- Stitch or continuous welding.
- Sliders help to set torch widely
- Both mechanized & manual torches useful.
- Max. pulling power 20 kg and max. 30° climbable.
- Crate filling time at the beginning and ending of the welding can be controlled for 0~3 seconds.
- Travel speed in cm/min or inch/min programmable.
- Battery power, 18Vdc 6.0Ah lithium-ion, 10-12Hrs use.



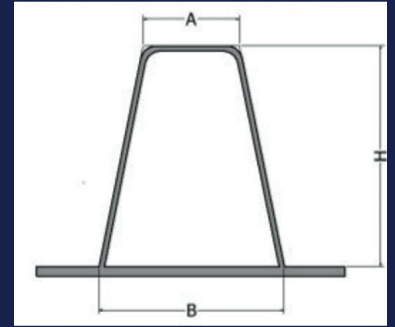
### FILLET WELDING



### BUTT WELDING



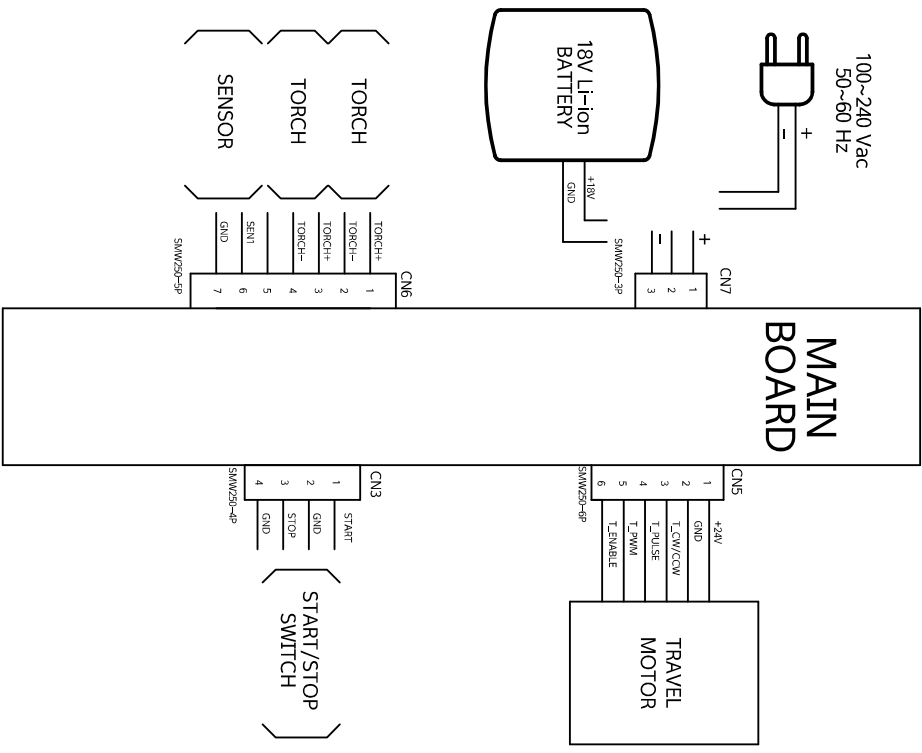
### WORKPIECE



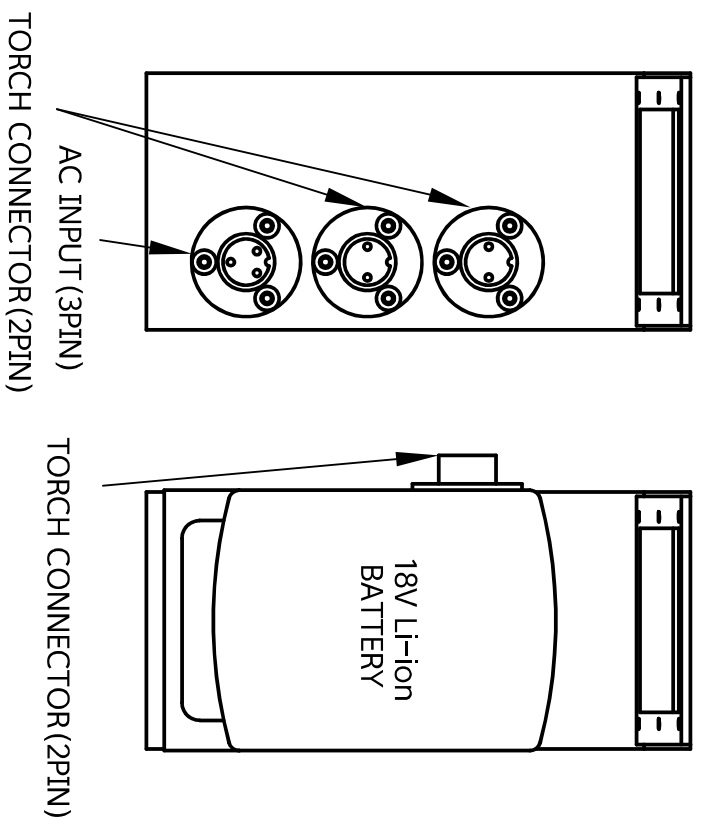
MAJOR PARTS	DESCRIPTIONS	SPECIFICATIONS
General	Dimensions	Carriage: 600(W) x 280(L) x 500(H)
	Weight	10,5 kg
	Input source	Lithium-ion Battery 18Vdc 6.0 Ah (10-12 Hrs use)
Traveling unit	Motor	24Vdc, 10W, 5.000 rpm
	Reducer	1:624
	Speed	0~860mm/min
	Power transmission	4 wheels chain driven
	Travel	Guide roller travels along to U-RIB of profile
Slide	A	Min 150 ~ Max 560
	B	Min 150 ~ Max 560
	H	Min 110 ~ Max 440



# CONNECTION DIAGRAM

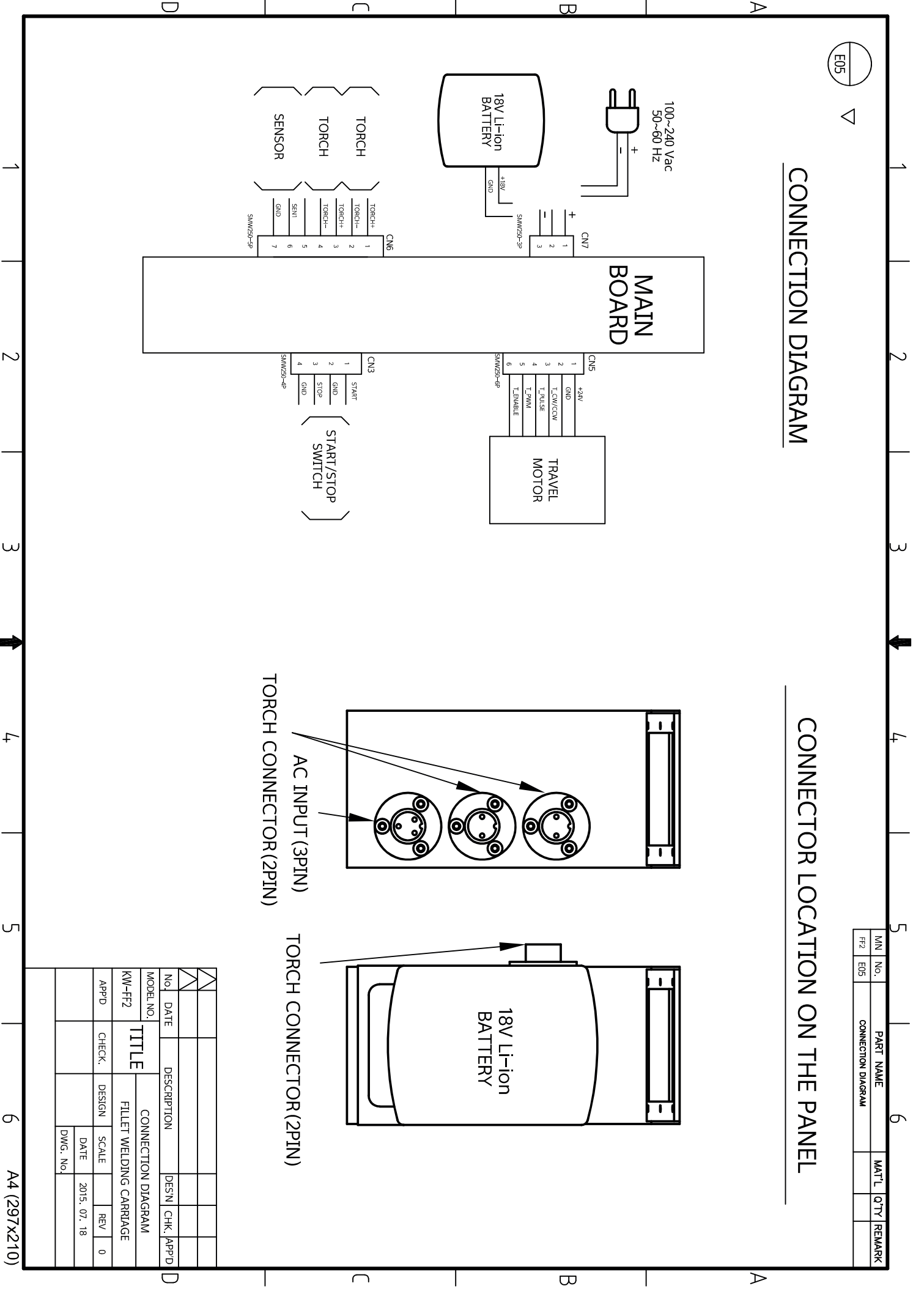


# CONNECTOR LOCATION ON THE PANEL



WIN No.	PART NAME	MAT'L	QTY	REMARK
E05	CONNECTION DIAGRAM			

MODEL NO.	TITLE		CONNECTION DIAGRAM	
KW-FF2	FILLET WELDING CARRIAGE			
APP'D	CHECK	DESIGN	SCALE	REV
			DATE	2015. 07. 18
			DWG. No.	





## EXPERIENCE THE CONVENIENCE OF EVERYTHING UNDER ONE ROOF

---

At Lascentrum, you can find everything you need regarding products for welding and safety. Lascentrum has been established in 1988 and now imports a complete range of welding consumables, gouging electrodes, gas welding & cutting equipment, welding blankets, safety products and accessories.

## CONTACT

---

Nieuwland Parc 1  
2952 DA Alblasserdam,  
The Netherlands

T:+31 (0)78 642 96 56  
F:+31 (0)78 642 96 86

[www.lascentrum.com](http://www.lascentrum.com)  
[info@lascentrum.com](mailto:info@lascentrum.com)

