

Lascentrum *welding & cutting*

EXPERIENCE THE CONVENIENCE OF EVERYTHING UNDER ONE ROOF



LT-141 PLASMA CUTTING TORCH

MAILING ADDRESS

P.O. BOX 6
2980 AA Ridderkerk

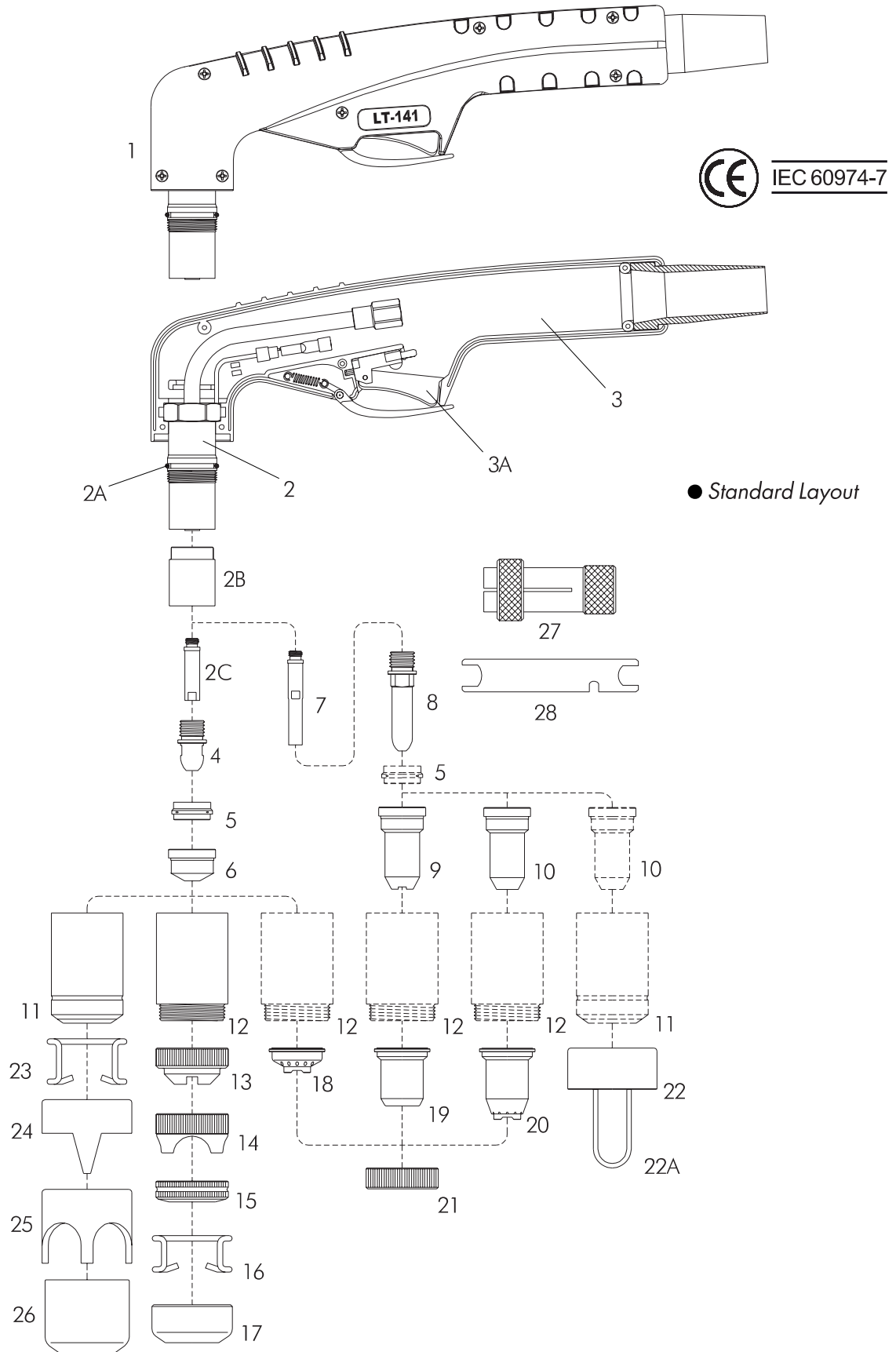
INTERNET

info@lascentrum.com
www.lascentrum.com

PHONE/FAX

T: +31 78 6429656
F: +31 78 6429686

LT-141 PLASMA CUTTING TORCH TECHNICAL DATA



LT-141 TECHNICAL DATA & REPLACEMENT PARTS SUITABLE FOR TRAFIMET® A140 - ERGOCUT 141

TECHNICAL DATA LT-141

Max. Current:	150 Amps	Gas Flow:	470 scfh (220 lpm)
Duty Cycle:	150 Amps - 60%	Post Flow Time:	90 sec. recommended
Gas:	Air	Pilot:	Electrode to tip
Gas Pressure:	70 psi (4.5 - 5.0 bar)	Ignition:	HF

TORCH PARTS

PRODUCT#	ITEM#	STANDARD LAYOUT	DESCRIPTION
375.PF0155	1	X	Torch Head complete with handle
375.6201	2	STANDARD	Hand torch head
375.EA0131	2A	STANDARD	O - Ring
375.60080	2B	STANDARD	Front insulator
375.05004	2C	STANDARD	Diffuser
375.09706	3	STANDARD	Handgrip with microswitch
375.07301.20	3A	STANDARD	Switch
375.PR101	4	STANDARD	Electrode
375.PE101	5	STANDARD	Swirl ring
375.PD101-11	6	X	Tip Ø 1.1
375.PD101-14		X	Tip Ø 1.4
375.PD101-17		X	Tip Ø 1.7
375.PD101-19		STANDARD	Tip Ø 1.9
375.PD101-30		X	Gouging tip Ø 3.0
375.05005	7	X	Extended Diffuser
375.52538	8	X	Extended electrode
375.51159	9	X	Extended tip (max. 50A)
375.51159.14	10	X	Extended tip Ø 1.4 - (for 51958 + 51959 or 60380)
375.51159.17		X	Extended tip Ø 1.7 - (for 51958 + 51959 or 60380)
375.51159.19		X	Extended tip Ø 1.9 - (for 51958 + 51959 or 60380)
375.PC101/102	11	STANDARD	Nozzle retaining cap, long life
375.PC103/131	12	X	Contact nozzle retaining cap
375.PC103/131		X	Contact nozzle retaining cap, Max.life
375.CV23	13	X	Spacer for contact cutting
375.CV39	14	X	Large spacer for contact cutting
375.51952	15	X	Spring holder protection nut
375.51911	16	X	Spacer spring for code 51952
375.51953	17	X	Gouging spacer
375.51950	18	X	Spacer for contact cutting, hand
375.CV8	19	X	Shield cup, hand (max. 50A, for use with item. 21 only)
375.CV9	20	X	Spacer for contact cutting, hand (for use with item. 21 only)
375.51959	21	X	Locking nut
375.60380	22	X	Spacer complete with springs
375.60381	22A	X	Spare springs
375.CV11	23	STANDARD	Spacer spring
375.CV12	24	X	Double pointed spacer
375.CV14	25	X	Crown spacer
375.CV13	26	X	Gouging spacer
375.GR60	27	X	Extractor for swirl ring
375.60368	28	X	Wrench for electrode

ACCESSORIES

PRODUCT#	DESCRIPTION
375.51851	Circle cutting attachment
375.51807	Cutting guide